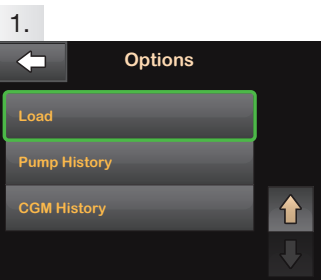


# Load a Cartridge

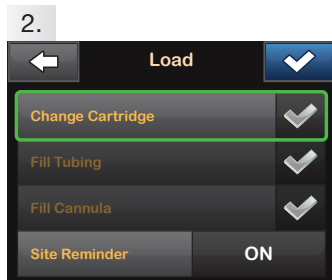
## for the t:slim X2 Insulin Pump



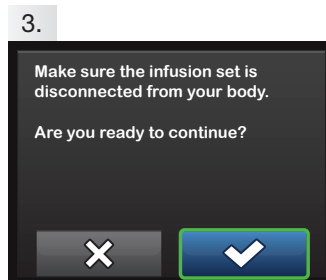
The instructions below are provided as a reference tool for caregivers who are already familiar with the use of an insulin pump and with insulin therapy in general. Not all screens are shown. For more detailed information on the operation of your Tandem insulin pump, please refer to its user guide.



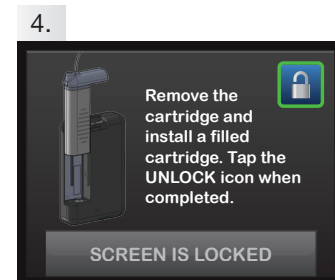
1. From the Options menu, tap **Load**.



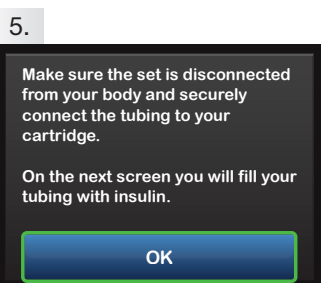
2. Tap **Change Cartridge**. A screen will appear to confirm that all insulin deliveries will be stopped. Tap to continue.



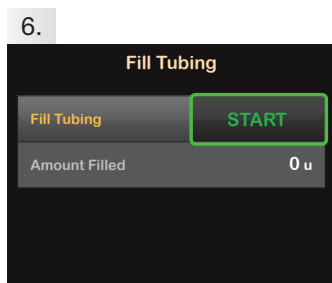
3. Disconnect the infusion set from your body and tap to continue.



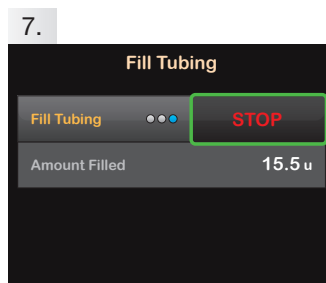
4. Remove the used cartridge. Install filled cartridge. Tap the unlock icon when completed. Tap to continue.



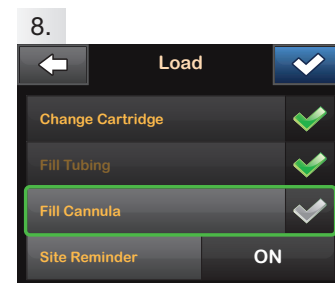
5. Verify that the infusion set is disconnected from your body. Connect the infusion set tubing to the tubing connector on the cartridge. Tap .



6. Hold the pump vertically to ensure any air in the cartridge will be dispelled first. Tap **START**. The pump will beep and vibrate regularly while the tubing is filled.

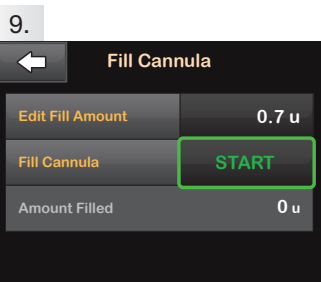


7. Tap **STOP** after three drops of insulin are seen at the end of the infusion set tubing, or after a minimum of 10 u have been filled. Verify that drops are seen and tap .

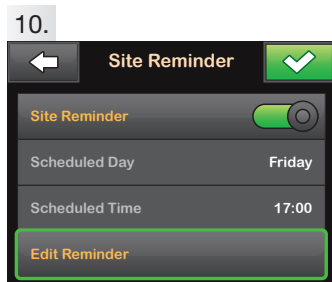


8. From the load menu, tap **Fill Cannula**. Insert a new infusion set and connect filled tubing to site, then tap .

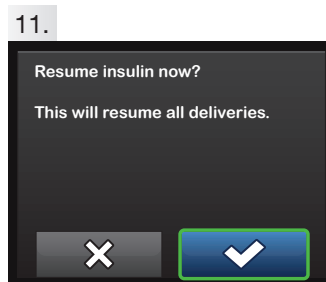
**NOTE:** If you are using a steel needle infusion set, there is no cannula. Skip this section.



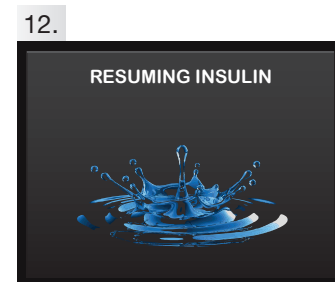
9. Tap **Edit Fill Amount**. Select amount needed for cannula fill. Refer to your infusion set instructions for use for proper cannula fill amount. Tap **START**.



10. After the cannula fill is complete, you can set a Site Change reminder. Tap if correct. Tap **Edit Reminder** if settings need to be changed.



11. A confirmation screen is displayed. Tap . A reminder to test BG in 1–2 hours will display. Tap .



12. The RESUMING INSULIN screen will appear.



24/7 Technical Support  
0508 634 103



t:simulator App  
A demo as simple as our pumps!



© 2019 Tandem Diabetes Care, Inc. All rights reserved. Tandem insulin pumps are intended for the subcutaneous delivery of Humalog or NovoRapid/NovoLog U-100 insulin, at set and variable rates, for the management of diabetes mellitus in persons requiring insulin. The t:slim X2™ insulin pump is approved for individuals 6 years of age and older. For important safety information, please visit [www.tandemdiabetes.com/safetyinfo](http://www.tandemdiabetes.com/safetyinfo). Tandem Diabetes Care is a trademark of Tandem Diabetes Care, Inc., registered in the U.S. and other countries. t:slim X2 is a trademark of Tandem Diabetes Care, Inc. Apple and the Apple logo are trademarks of Apple Inc., registered in the United States and other countries. App Store is a service mark of Apple Inc. Google Play and the Google Play logo are trademarks of Google LLC. Tandem is distributed in New Zealand by NZMS Diabetes, 2a Fisher Crescent, Mt Wellington, Auckland 1060. Ph: 09 259 4062. April 2020 NZDI\_TAN\_012\_B.

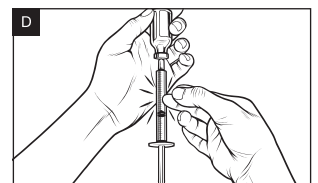
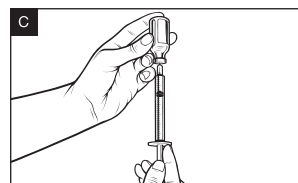
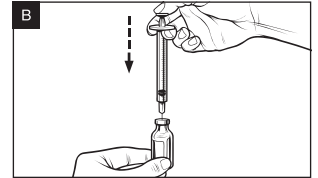
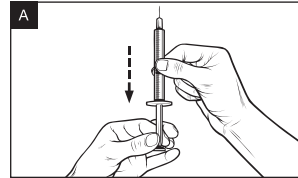
For more information on NZMS Diabetes product range, please contact us on  
**0800 500 226** or at [nzms@nzms.co.nz](mailto:nzms@nzms.co.nz)  
[nzmsdiabetes.co.nz](http://nzmsdiabetes.co.nz)



# Instructions for Drawing Insulin From Vial Into Syringe

**Use proper clean technique while performing the following:**

1. Inspect the needle and syringe package for any signs of damage. Discard any damaged product.
2. Wash your hands thoroughly.
3. Wipe the rubber septum of the insulin vial with an alcohol swab.
4. Remove the needle and syringe from their packaging. Securely twist needle onto syringe. Safely remove protective cap from needle by pulling outward.
5. Draw air into syringe up to the amount of insulin desired (see image A).
6. With insulin vial upright, insert needle into vial. Inject air from syringe into vial. Maintain pressure on syringe plunger (see image B).
7. With needle still inserted into vial, turn vial and syringe upside down. Release syringe plunger. Insulin will begin to flow from the vial into the syringe.
8. Slowly pull back the plunger to the desired amount of insulin (see image C).
9. While the filling needle is still in the vial and upside down, tap the syringe so that any air bubbles rise to the top (see image D). Then slowly push the plunger upwards, forcing any air bubbles back into the vial.



# Instructions for Filling the Cartridge

**To load a filled cartridge, perform the following steps before loading the cartridge onto the pump.**

Refer to the user guide that came with your system for detailed installation instructions.

1. Inspect the cartridge package for any signs of damage. Discard any damaged product.
2. Open the package and remove the cartridge.
3. Hold the cartridge upright and gently insert the needle into the white insulin fill port on the cartridge (see image E). The needle is not intended to go all the way in, so do not force it.
4. Keeping the syringe vertically aligned with the cartridge, and the needle inside the fill port, pull back on the plunger until it is fully retracted (see image F). This will remove any residual air from the cartridge. Bubbles will rise toward the plunger.
5. Make sure the needle is still in the fill port and release the plunger. Pressure will pull the plunger to its neutral position but it will NOT push any air back inside the cartridge (see image G).
6. Withdraw the needle from the fill port.
7. Turn the syringe upright and pull down on the plunger (see image H). Flick the barrel to make sure that any air bubbles rise to the top.
8. Gently press on the plunger to remove air bubbles until insulin fills the needle hub and you see a drop of insulin at the tip of the needle (see image I).
9. Re-insert the needle in the fill port and slowly fill the cartridge with insulin (see image J). It is normal to feel some back pressure as you slowly press on the plunger.
10. Maintain pressure on the plunger while you remove the needle from the cartridge. Check the cartridge for leaks. If you detect insulin leaking, discard the cartridge and repeat entire process with a new cartridge.

