

Step 1: How to create a patient account

You will receive an e-mail from your nurse/doctor with the title "Your healthcare professional invites you to join diasend[®]".

Click on the link in this e-mail that says [Click here to get started](#) and follow the steps below.

If you haven't received an e-mail, you can create an account at www.diasend.com by clicking the "Register here" button.

1 Login details

Enter your email address, which will be your username, as well as a password of your choosing for your diasend[®] personal account. Click continue.

1 2 3 4
Login details Personal Information Share data Confirm registration

Login details

*Required information

E-mail * Repeat e-mail *

Your e-mail address will be your user name for diasend[®]. The e-mail address you enter must be valid.

Password *

2 Personal information

Enter your personal information then click continue.

1 2 3 4
Login details Personal information Share data Confirm registration

Personal information

*Required information

First name * Last name * Date of birth (yyyy-mm-dd) *

Address row 1 Gender *

3 Share data

If you received an invite from your healthcare professional via e-mail, the Clinic ID number will already be filled in. This is the unique ID number for your clinic which makes it possible for you to share your data with them. Click continue.

If you didn't receive an invite, you can add this Clinic ID later. Finish the registration, then log in to your account and go to the "Account admin" tab.

1 2 3 4
Login details Personal information Share data Confirm registration

Share data

If you do not have access to your health care professional's Clinic ID at this time, you may register clinic IDs later. Just log in at diasend and you can register it under account information.

Clinic ID
12-34567

4 Confirm registration

Check the box to approve terms and conditions and confirm the registration. Click continue.

1 2 3 4
Login details Personal information Share data Confirm registration

Confirm registration

Login details
Subscription: diasend[®] Personal (Free)
User name: hejhej@diasend.com
Password: 1*****

Personal information
Jane Doe
42141
United States

Medical information
Date of birth (yyyy-mm-dd): 1987-02-03
Gender: Female
Diabetes type: Diabetes type 1

I approve the terms and conditions of diasend[®] Personal and that Diasend AB handles my personal information to the extent necessary to deliver the service ordered. I am open for receiving update information, invites to product testing, news, marketing communications and other communications that could be of interest to me.

Where did you hear about diasend[®]?
(e.g. Facebook, Twitter, friend, care provider, ...)

5 Download and install diasend[®] uploader

Install diasend[®] uploader on your PC or Mac, by clicking on the relevant icon. Follow the installation instructions on the screen.

1 2 3 4
Login details Personal information Share data Confirm registration

Thank you

Your diasend[®] Personal account has now been registered.

In order to upload your data to your diasend[®] Personal account, you will need the tool diasend[®] Uploader (free of charge) installed on your computer.

Need support?

Contact NZMS Diabetes on 09 259 4062 or at diabetes@nzms.co.nz

Step 2: How to start uploading data to diasend®

1

Start diasend® Uploader

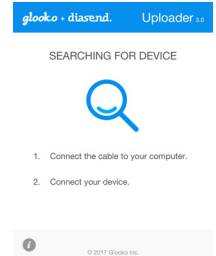
Double click on the diasend® uploader icon on your computer (if you have a Mac please go to the "applications folder" or "launchpad" to find diasend® uploader).



2

Connect the device cable

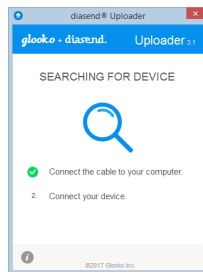
Connect the cable for your device to a USB port on your computer.



3

Connect your device to the cable

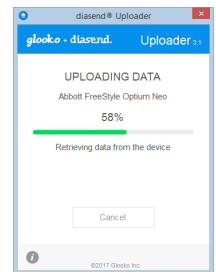
Connect the device to the cable or place it in front of an IR dongle.



4

Device will start to upload

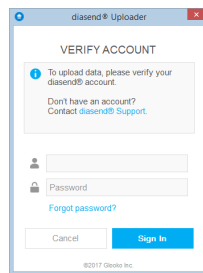
Do not unplug your device until the uploading process is completed.



5

Verify your account

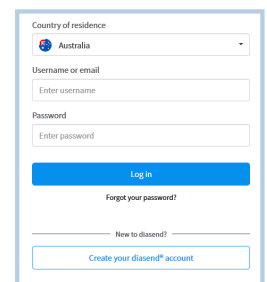
Enter your username (entire email address and the password you created when registering for your account). Click Sign in.



6

View your data

Log in at www.diasend.com and view your data.



7

Access your data from your mobile device

Download the diasend® Mobile App from Google Play (Android) or the App Store (iOS) to review and upload your data from your mobile device.



This software does not provide any medical advice and should not be used for that purpose. Consult your healthcare professional for any clinical advice and to see if this product is right for you.

For more information on diasend by Glooko please contact us on **09 259 4062** or at diabetes@nzms.co.nz

nzmsdiabetes.co.nz  

To contact Glooko directly, visit glooko.com/int or email support@diasend.com. NZDI_DIA_003 May 2020

