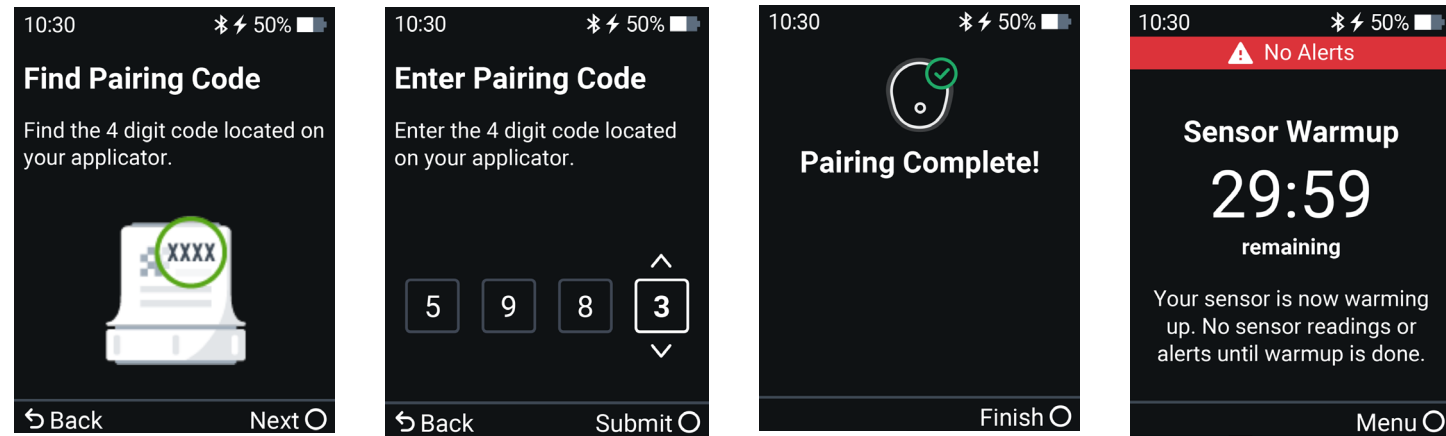


STEP 4: PAIR AND START WARMUP



1. Find pairing code; located on applicator.
2. Enter pairing code.
3. Wait for your sensor to pair.
4. Begin sensor warmup.

UNDERSTANDING YOUR TREND SCREEN AND ARROWS

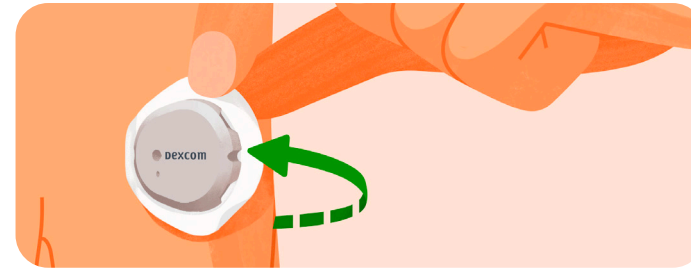
Your trend screen shows your sensor glucose reading, trend graph, and trend arrow. Trend arrows show the speed and direction that your glucose is heading.



TREND ARROW READINGS

→	Steady: Changing less than 1.7 mmol/L in 30 minutes	↑ ↓	Rising or falling: Changing 3.3–5.0 mmol/L in 30 minutes
↗ ↘	Slowly rising or falling: Changing 1.7–3.3 mmol/L in 30 minutes	↑↑ ↓↓	Rapidly rising or falling: Changing more than 5.0 mmol/L in 30 minutes

DAY 10: ENDING YOUR DEXCOM SENSOR SESSION

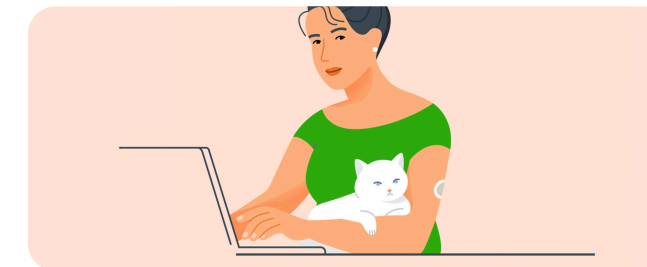
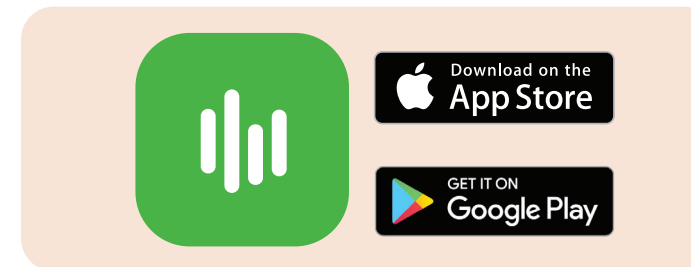


Each sensor session lasts up to 10 days plus a 12-hour grace period. You will get alerts letting you know when the sensor session or grace period will end soon.

After the sensor session ends, peel off the patch like a bandage.

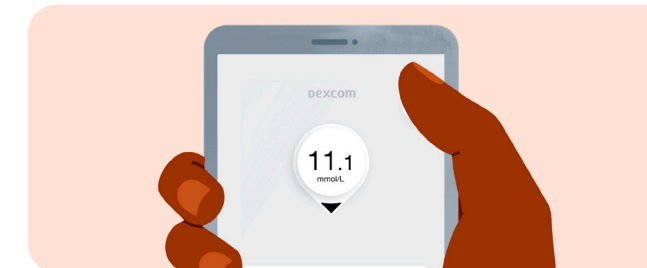
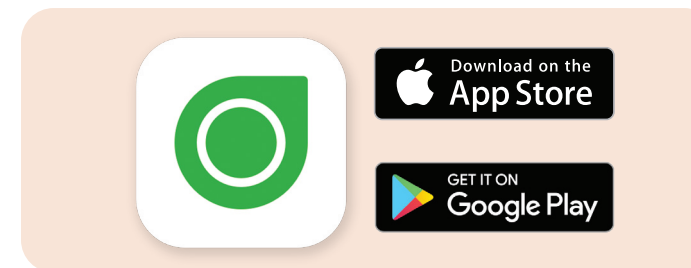
NEXT STEPS TO MAXIMIZE YOUR CGM EXPERIENCE:

DEXCOM CLARITY



Download the Dexcom Clarity app or visit Dexcom Clarity at clarity.dexcom.eu to track your progress and share data with your clinic. Login using your existing Dexcom account or create a new account.

DEXCOM G7 AND DEXCOM ONE+ APP



Download the Dexcom G7 or Dexcom ONE+ app to see glucose information on your phone and receiver.* Login using your existing Dexcom account or create a new account. The app walks you through the setup step-by-step, and it joins your current sensor session.

0508 634 103
dexcom@nzms.co.nz

dexcom.com



ALWAYS READ THE LABEL AND FOLLOW THE DIRECTIONS FOR USE. Read the warnings available on dexcom.com/downloadsandguides before purchasing. Consult your healthcare professional to see which product is right for you. Dexcom CGM is a glucose monitoring system indicated for continuously measuring glucose in the interstitial fluid in persons ages 2 years and older, including pregnant women. *Smart device and Receiver sold separately; for a list of compatible devices, visit dexcom.com/compatibility. This guide is for concept illustration only. Always read the indications, warnings, precautions and instructions provided with your Dexcom CGM System. If you don't, you may have inaccurate sensor readings, missed alerts, and might miss a severe low or high glucose event. Dexcom, Dexcom G7, Dexcom ONE+, Dexcom Clarity and any related logos and design marks are either registered trademarks or trademarks of Dexcom, Inc. in the United States and/or other countries. ©2024 Dexcom, Inc. All rights reserved. NZMS is a Dexcom company. Distributed in New Zealand by NZMS, 2A Fisher Crescent, Mt. Wellington, Auckland 1060, New Zealand. MAT-1050 Rev001 March 2024.

Receiver Setup for Dexcom G7 and Dexcom ONE+



ALWAYS READ THE LABEL AND FOLLOW THE DIRECTIONS FOR USE. Read the warnings available on dexcom.com/downloadsandguides before purchasing. Consult your healthcare professional to see which product is right for you.

This is an abbreviated instruction. Instructions pictured may vary based on the Dexcom device you're using or similar. For detailed, step-by-step instructions on how to use the Dexcom G7 and the Dexcom ONE+ Continuous Glucose Monitoring (CGM) System, please refer to the instructions for use. Screens are representational only. Your product may look different.

HOW DOES THE DEXCOM CGM WORK?



DEXCOM CGM RECEIVER

- Displays a glucose reading up to every 5 minutes.

APPLICATOR WITH BUILT-IN SENSOR

- Applicator inserts the sensor under your skin.
- Sensor receives glucose information.
- Sensor lasts 10 days and offers the flexibility of a 12-hour grace period, allowing you to swap your sensor when convenient.
- Sensor sends glucose information to the receiver.

ACCURACY



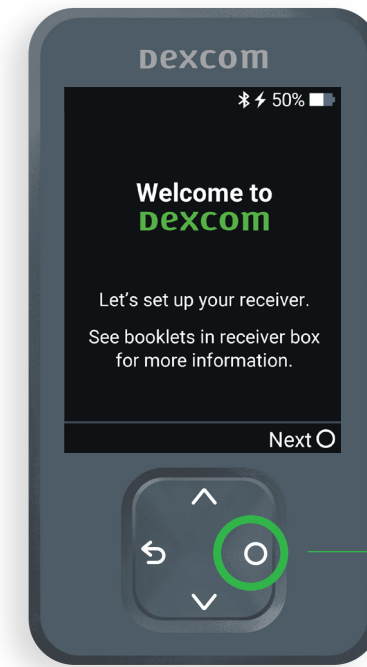
Dexcom CGM readings and meter values may not be the same, and that's okay. The Dexcom CGM and a meter measure glucose from two different types of body fluids: interstitial fluid and blood. Readings can be different and still be considered accurate.

RECEIVER NAVIGATION

To scroll faster, hold down the Scroll button. To move to the next field, use the Select button.

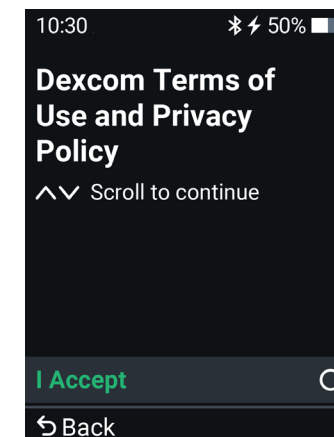


STEP 1: SET UP RECEIVER

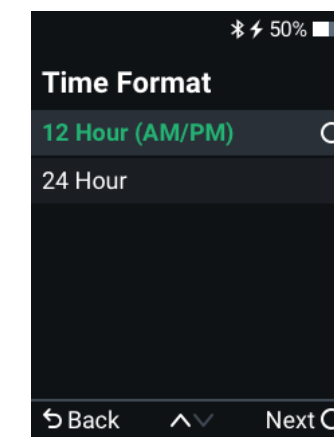


1. To turn the receiver on press and hold the **Select** button for 3-5 seconds.
2. Select **Next** on the Welcome Screen.

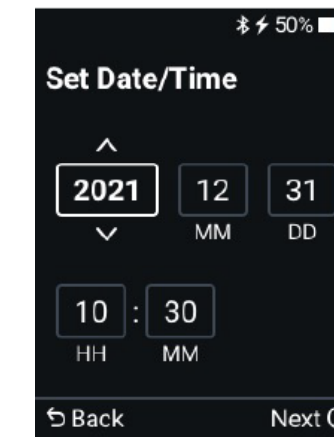
Select



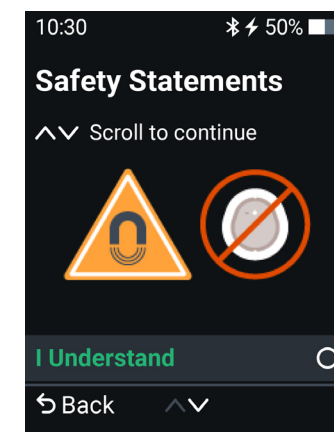
3. Accept Terms of Use.



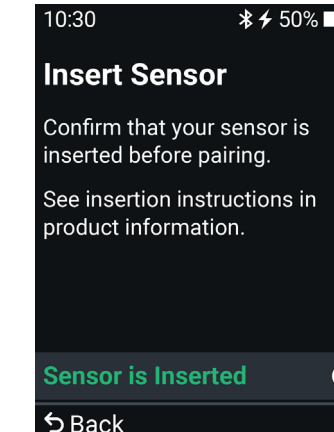
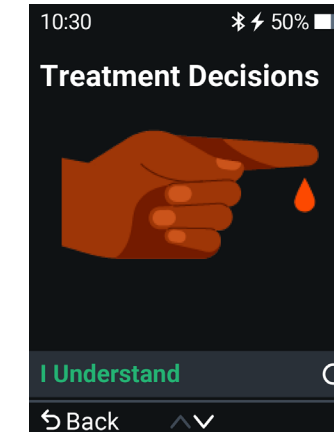
4. Pick time format.



5. Enter date and time.



6. View the mini tutorial on safety, treatment decisions, trend arrows, reading your home screen, and alerts.



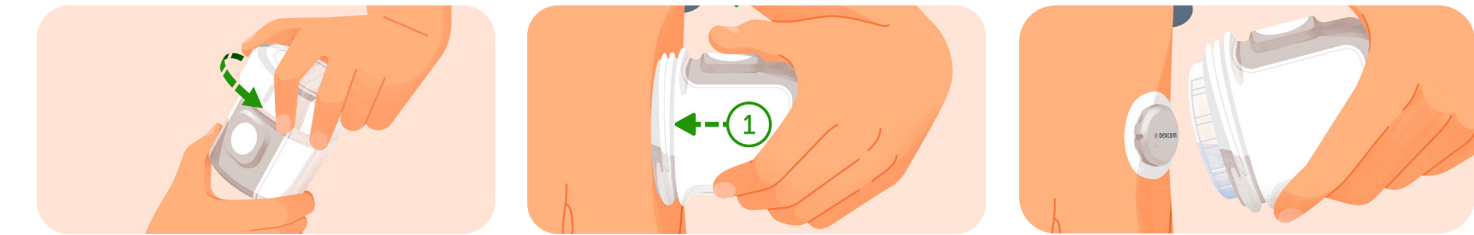
7. Insert your sensor.

STEP 2: INSERT SENSOR

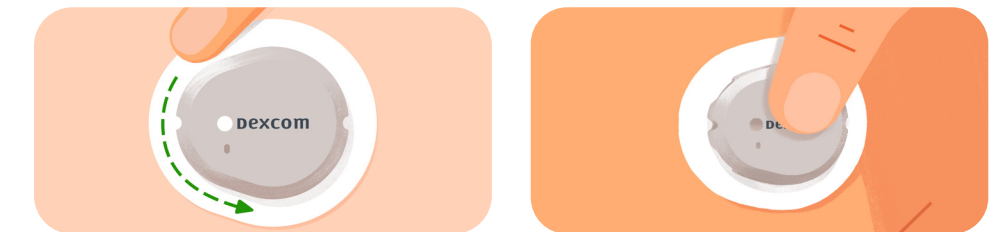
Age 7 years and older: Use abdomen or back of upper arm.

Age 24 months - 6 years: Use abdomen, upper buttocks, or back of upper arm.

Before you begin, wash and dry your hands; then clean the sensor site with alcohol.

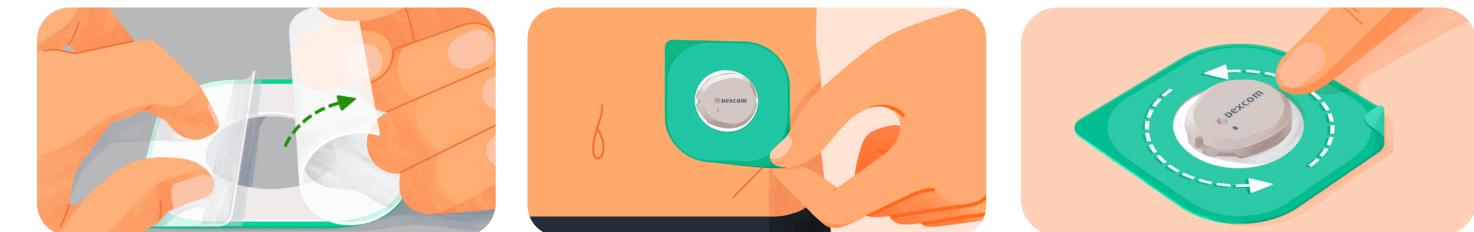


1. Unscrew Cap. Don't touch inside applicator.
2. Press and hold applicator firmly against skin and then push button.
3. Remove applicator.



4. Rub firmly around patch 3 times.
5. Gently press on top of sensor for 10 seconds.

STEP 3: APPLY OVERPATCH



1. Carefully pull off both clear liners, one at a time. Don't touch white adhesive area.
2. Use coloured tab to place overpatch around sensor.
3. Rub around overpatch.



4. Use tab to peel off liner.
5. Rub around overpatch.
6. On receiver, confirm sensor is inserted.