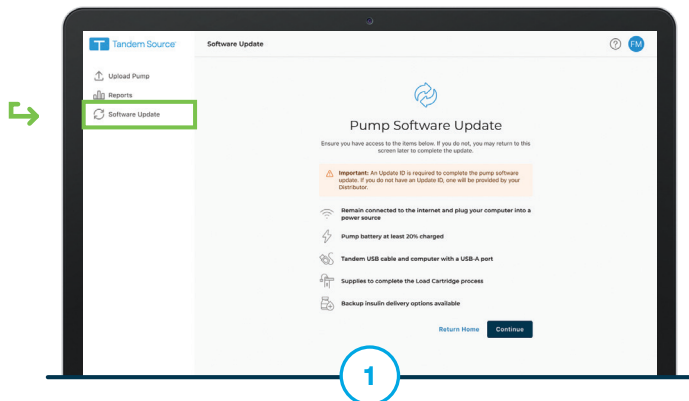


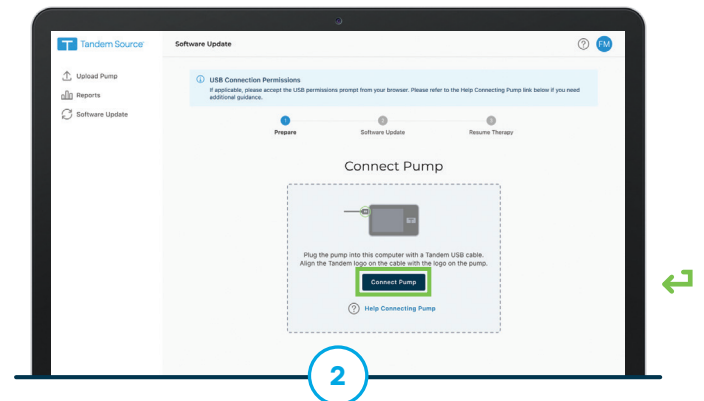


These instructions will show users how to remotely update their t:slim X2™ insulin pump with new features.

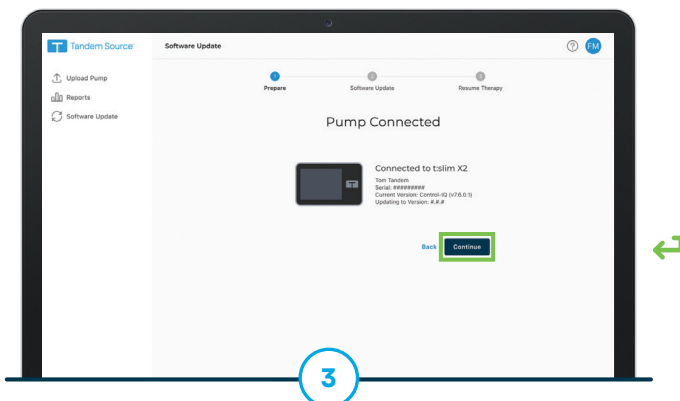
Note: NZMS Diabetes will provide you with the Update ID needed to complete the update as well as any required training. Users should obtain this Update ID from their distributor prior to starting the software update.



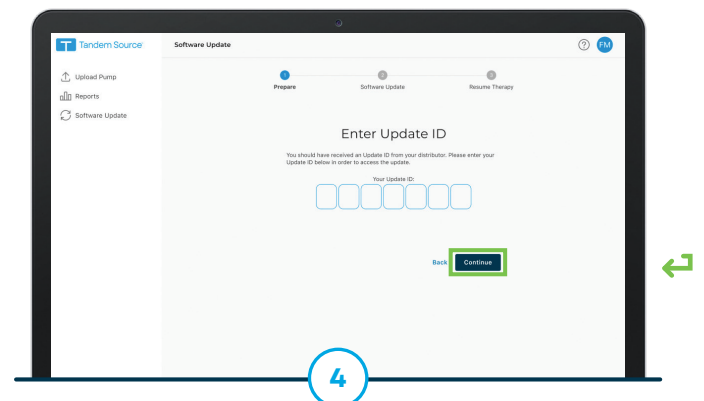
Log in to the Tandem Source platform. Select **Software Update** from the Navigation sidebar. Click **Continue** after reviewing the update requirements and safety information.



Connect the micro-USB end of the USB cable provided by Tandem Diabetes Care to the insulin pump and connect the other end to a USB port on the user's computer. Click **Connect Pump**.



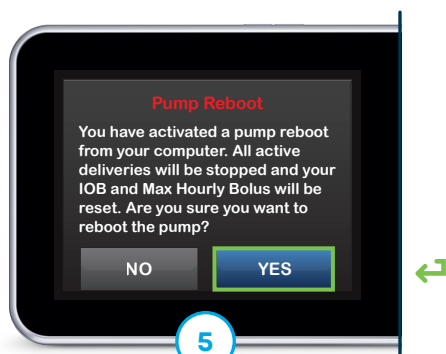
A Pump Connected screen will appear if the connection is successful. Confirm the pump serial number is accurate before clicking **Continue**.



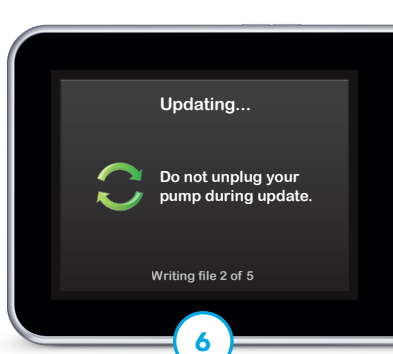
Enter the Update ID provided by NZMS Diabetes into Tandem Source. Click **Continue**.



Continue to follow the on-screen instructions within Tandem Source and complete any required actions on your t:slim X2 pump.




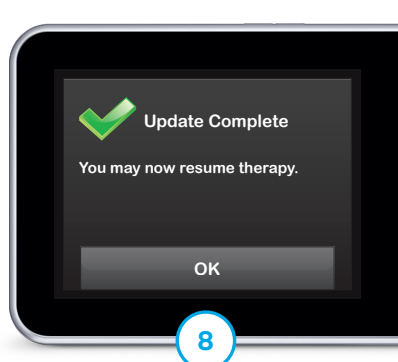
A Pump Reboot screen appears. Tap **Yes** to begin the reboot and confirm that insulin deliveries will be stopped.



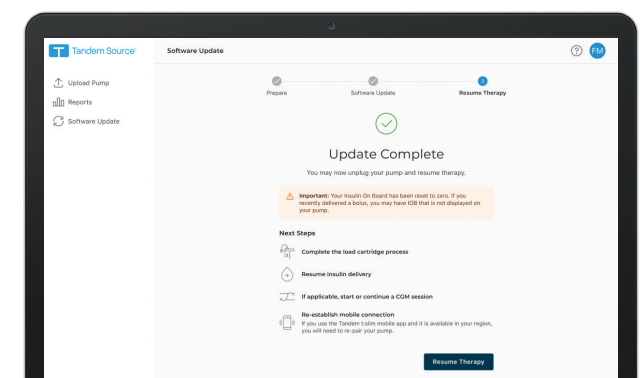
The software update begins. Do not disconnect from the Internet or unplug the pump from the computer during this process.



Using the keypad on the pump, enter the Update ID again and tap  to continue.



The update is complete.



 **Note:** Click **Resume Therapy** on Tandem Source for additional instructions on how to safely resume insulin delivery.

These instructions are provided as a reference tool for individuals who are already familiar with the use of a Tandem Diabetes Care insulin pump. Not all screens are shown. For more detailed information on the operation of the t:slim X2 insulin pump, please refer to its user guide.

Important Safety Information: The t:slim X2 insulin pump with Control-IQ technology is intended for the management of type 1 diabetes mellitus in individuals 6 years of age and greater. Visit tandemdiabetes.com/safetyinfo for additional important safety information.

WARNING: Control-IQ technology should not be used by anyone under the age of 6 years old, who require less than 10 units of insulin per day, or who weigh less than 25 kilograms.

0800 500 226
nz.diabetes@dexcom.com

nzmsdiabetes.co.nz



TANDEM
Diabetes Care



a Dexcom company

Always read the label and follow the directions for use. Read the warnings available on nzmsdiabetes.co.nz/resources before purchasing. Consult your healthcare professional to see which product is right for you. Tandem t:slim X2 insulin pump with Control-IQ is a continuous delivery of insulin through a subcutaneously applied infusion set. The algorithm will adjust insulin delivery according to the predicted glucose when used with a compatible CGM. Tandem Source is a web application intended to support diabetes management through the display and analysis of information uploaded from Tandem insulin pumps. © 2025 Tandem Diabetes Care, Inc. All rights reserved. Tandem Diabetes Care, Control-IQ, and t:slim X2 are registered trademarks or trademarks of Tandem Diabetes Care, Inc. New Zealand Medical & Scientific Limited is a Dexcom company. 2A Fisher Crescent, Mount Wellington, Auckland 1060. NZDI_TAN_177 August 2025