

# t:slim X2 Insulin Pump

T:LOCK INFUSION SETS

Ideal for individuals who prefer easy, one-handed insertion.



## AutoSoft 90

- Automatic insertion device
- 90° insertion angle
- Soft teflon cannula
- Reversible connector for quick reconnection
- Transparent window at insertion point
- Ideal for users who prefer a simple, easy-to-use system

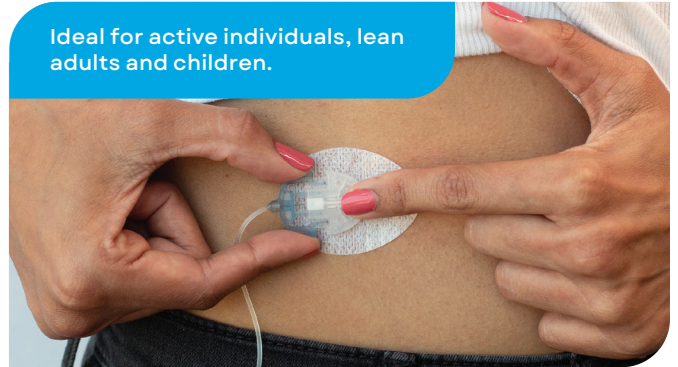
### Recommended timing for infusion set changes:

48 – 72 hours

### Available in:

6 or 9 mm cannula, 60 or 110 cm tubing

Ideal for active individuals, lean adults and children.



## AutoSoft 30

- Automatic insertion device
- 30° insertion angle
- Soft teflon cannula
- Large adhesive patch for more security
- Small window shows insertion point
- Reversible connector for quick reconnection
- Large grip area for easy disconnection

### Recommended timing for infusion set changes:

48 – 72 hours

### Available in:

13 mm cannula, 60 or 110 cm tubing

Ideal for individuals who prefer the reliability of steel cannula without compromising comfort.



## TruSteel

- Easy control with manual insertion
- 90° insertion angle
- Stainless steel cannula
- Second adhesive pad for extra security against cannula dislodgement
- Large grips areas for easy disconnection
- Ideal for users with sensitivities to plastic or frequent issues with bent cannulas
- Combines the reliability of a steel cannula with lasting comfort and ease of wear

### Recommended timing for infusion set changes:

24 – 48 hours

### Available in:

6 or 8 mm cannula, 60 or 80 cm tubing

Ideal for active individuals, lean adults and children who prefer control over insertion angle.



## VariSoft

- Easy control with manual insertion
- User adjustable insertion angle (20°– 45° degree)
- Soft teflon cannula
- Small window shows insertion point
- Large adhesive pad for more security
- Often used by active individuals, lean adults, and children

### Recommended timing for infusion set changes:

48 – 72 hours

### Available in:

13 mm cannula, 60 cm tubing

# T:Lock™ Infusion Sets and Cartridge

## VARIETY OF INFUSION SETS TO MEET DIFFERENT NEEDS

### AutoSoft 90

- 90° insertion angle
- Integrated inserter
- Teflon cannula



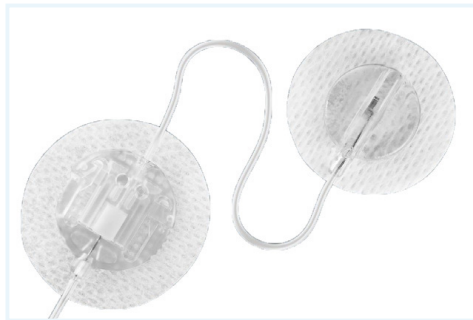
### AutoSoft 30

- 30° insertion angle
- Integrated inserter
- Teflon cannula



### TruSteel Set

- Manual straight in insertion
- Stainless steel/metal cannula



### VariSoft™ Set

- Manual angled set
- Teflon cannula



## t:lock Infusion Set and Cartridge Pharmac Order Codes (10 per pack)

|  |         |  |         |
|--|---------|--|---------|
| AutoSoft 90 Infusion Set t:lock 6mm/60cm   | 2556804 | TruSteel Infusion Set t:lock 6mm/60cm  | 2556863 |
| AutoSoft 90 Infusion Set t:lock 6mm/110cm  | 2556812 | TruSteel Infusion Set t:lock 6mm/80cm  | 2616491 |
| AutoSoft 90 Infusion Set t:lock 9mm/60cm   | 2556820 | TruSteel Infusion Set t:lock 8mm/60cm  | 2556898 |
| AutoSoft 90 Infusion Set t:lock 9mm/110cm  | 2556839 | TruSteel Infusion Set t:lock 8mm/80cm  | 2612550 |
| AutoSoft 30 Infusion Set t:lock 13mm/60cm  | 2556847 | VariSoft Infusion Set t:lock 13mm/60cm | 2679833 |
| AutoSoft 30 Infusion Set t:lock 13mm/110cm | 2556855 |  |         |

### t:lock Cartridge

|                  |         |
|------------------|---------|
| t:lock Cartridge | 2704188 |
|------------------|---------|

**Tech support** 0508 634 103

**General enquiry** 0800 500 226

**Email** [nz.diabetes@dexcom.com](mailto:nz.diabetes@dexcom.com)

[nzmsdiabetes.co.nz](http://nzmsdiabetes.co.nz)



Always read the label and follow the directions for use. Read the warnings available on [nzmsdiabetes.co.nz/resources](http://nzmsdiabetes.co.nz/resources) before purchasing. Consult your healthcare professional to see which product is right for you. The t:lock cartridge is an insulin reservoir for Tandem insulin pump. AutoSoft 90, AutoSoft 30, TruSteel infusion sets deliver insulin from Tandem insulin pump, subcutaneously self-inserted. The VariSoft infusion set is for the subcutaneous infusion of insulin. © 2024 Tandem Diabetes Care, Inc. All rights reserved. Tandem Diabetes Care, t:lock, and t:slim X2 are registered trademarks or trademarks of Tandem Diabetes Care, Inc. Distributed in New Zealand by NZMS (2A Fisher Crescent Mt. Wellington, Auckland 1060 New Zealand). NZMS is a Dexcom company. NZDI\_TAN\_103 December 2025